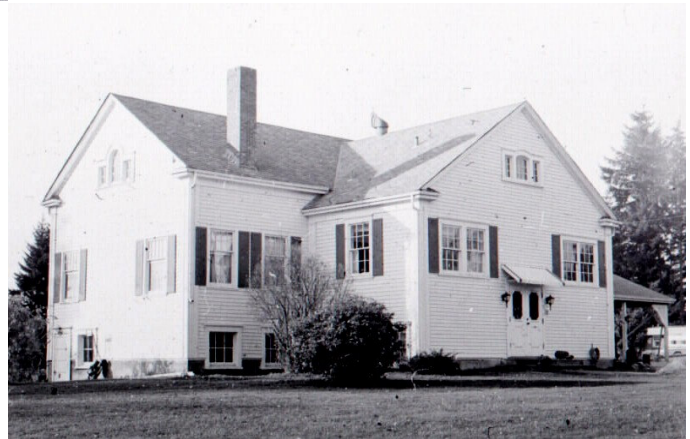


Early Federal Way Schools and the Naming of the Federal Way Area



The first Star Lake School was built in 1898. The second school burned in 1909. The third school was built in 1910. This building still exists at 3212 South 272nd Street.

The Harding school was built in 1920. This building still stands and is now being used as a church. It is located at 35905 16th Avenue So.



A new Federal Way School was built on the present high school site in 1929 and the other schools closed. In 1930 Federal Way School opened for grades one through eight. In 1937 an addition to the school was made which opened as Federal Way High school. In 1944 a junior high was added.



The Federal Way School opened in 1930 as a grade school. It has been remodeled many times and is now Federal Way High School.

“Federal Way” becomes area name.

In 1910, business and civic leaders met in Seattle to plan construction of a highway stretching from California to Washington. Construction began in 1915 with federal funds. In 1925, the Pacific Highway between the borders of Mexican and Canada was granted the designation of Federal Highway US-99.

The section between Seattle and Tacoma opened as an unpaved road. Additional federal funds were granted to pave the east half in 1927 and the west half in 1930. The road was officially dedicated as US-99 and opened on October 18, 1928. Prior to the opening of I-5 in the 1960s, Pacific Highway South was the main highway between Seattle and Tacoma.

The directors of the newly consolidated school district 210 named the district “Federal Way” for the then new federal highway adjacent to the new school. The building was partially financed by the sale of school land for the right of way. The whole area became known as Federal Way and the city adopted this name when it was incorporated in 1990.



The Green Parrot Restaurant was located at South 340th and Highway 99.



Dick Caster/Ed Opstad
Federal Way Historical Society
February 5, 2004

All photos courtesy of the Historical Society of Federal Way.
Copyright © 2004 by the Historical Society of Federal Way